

FUND STRUCTURE AND BASIS OF BUDGETING

Fund Structure

For accounting purposes the City is not viewed as a single entity, but rather as a collection of smaller, separate entities known as funds. Funds are the control structures that ensure that public monies are spent only for those purposes authorized and within the limits authorized. Each of the City's funds

- ✓ is classified into "major" or "non-major" fund
- ✓ is classified into one of eight "fund types" and
- ✓ is grouped according to the type of activity that is involved in the fund

Major funds have revenues, expenditures/expenses, assets, or liabilities (excluding extraordinary items) that are at least 10% of corresponding totals for all governmental or enterprise funds and at least 5% of the aggregate amount for all government and enterprise funds for the same item.

The City has four major funds, the General Fund, the Debt Service Fund, the Municipal Construction Fund and the Utility Fund. Although the Municipal Construction Fund may not meet this criterion every year, because of differing levels of construction activity, it has been classified as a major fund for consistency purposes.

The City utilizes governmental, proprietary and fiduciary fund types:

Governmental Fund Types

The five governmental fund types that account for the City's general government activities are the general fund, special revenue funds, debt service fund, capital projects fund, and permanent fund. The measurement focus is on determination of the flow of current financial resources, rather than the flow of economic resources.

The following are the City's governmental fund types:

The general fund is the City's primary operating fund. It accounts for all financial resources of the general government, except those that are required to be accounted for in another fund.

Twelve special revenue funds account for revenue sources that are legally restricted to expenditures for specific purposes (not including expendable trusts or major capital projects):

- | | |
|--|---|
| 1. Road & Bridge Fund | Treasury Confiscated |
| 2. State Housing Initiative Partnership (SHIP) Grant | 9. Law Enforcement Trust Fund - Justice Confiscated |
| 3. HUD Grants CDBG/HOME | 10. Law Enforcement Trust Fund - \$2 Police Education |
| 4. Law Enforcement Grant | 11. Law Enforcement Trust Fund - Florida Department of Law Enforcement (FDLE) Grant |
| 5. Police Community Services Grant | 12. Older Americans Act (OAA) |
| 6. ADA-Paratransit Grant | |
| 7. Community Bus Program | |
| 8. Law Enforcement Trust Fund - | |

All of the special revenue funds have appropriated fiscal year 2012-13 budgets except the State Housing Initiative Program (SHIP), the ADA-Paratransit Grant and the Police Community Services Grant. It is expected that fiscal year 2011-12 would be the final year of activity for the ADA-Paratransit Grant since effective October, 2012 the City will no longer be a provider for Broward County's Paratransit Program.

The debt service fund accounts for the servicing of general long-term debt not being financed by proprietary or nonexpendable trust funds.

The capital projects fund accounts for the acquisition of fixed assets or construction of major capital projects not being financed by proprietary or nonexpendable trust funds. The budget for this fund is adopted on a project length basis.

The permanent fund is used to report resources that are legally restricted to the extent that earnings, and not principal, may be spent. The Wetland Mitigation Trust is the only permanent fund.

Proprietary Fund Types

The proprietary fund type is used to account for the City's ongoing operations and activities that are similar to those often found in the private sector. The measurement focus is on determination of the flow of economic resources. The following are the City's proprietary fund types:

Enterprise funds are used to account for operations that provide a service to citizens, financed primarily by a user charge, and where the periodic measurement of net income is deemed appropriate for capital maintenance, public policy, management control, accountability, and other purposes. The only Enterprise Fund in the fiscal year 2012-13 Budget is the Utility Fund.

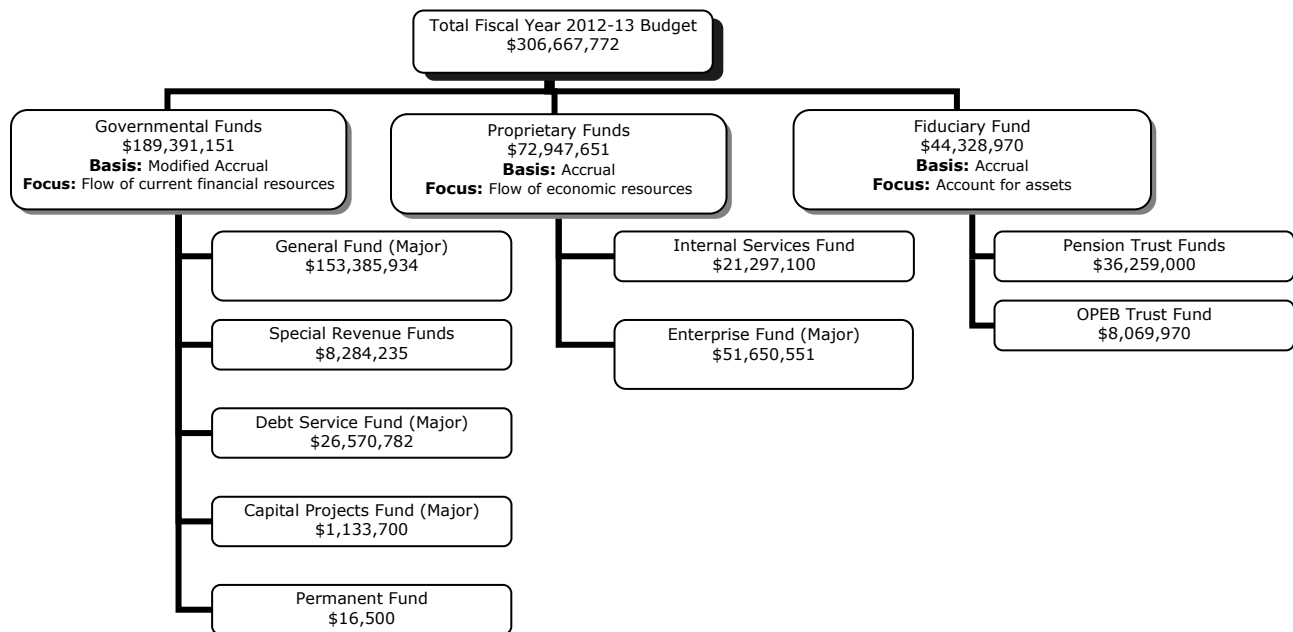
Internal service funds account for operations that provide services to other departments or agencies of the City, or to other governments, on a cost-reimbursement basis. The Public Insurance [Risk Management] Fund is the only Internal Service Fund in the fiscal year 2012-13 Budget.

Fiduciary Fund Types

Fiduciary funds are used to account for assets held in a trustee or agency capacity for others. The measurement focus is to account for assets. The City has two fiduciary fund types:

Pension trust funds are used to report resources that are required to be held in trust for the members and beneficiaries of the defined benefit pension plans and other post employment benefits (OPEB). The City has three pension trust funds: one for general employee's pension, one for police officers and firefighter's pension and one for retiree health and life insurance (OPEB).

Other Post Employment Benefits (OPEB) trust fund is used to report resources that are required to be held in trust for members who are beneficiaries of the City's retiree health and life insurance plan.



Funds Excluded from Adopted Budget

The City currently owns and operates four Charter Elementary Schools, two Charter Middle Schools, and one Charter High School. The schools are accounted for in four separate Special Revenue Funds of the City, which are governmental funds. The Charter Schools operate on a fiscal year basis ending June 30th. Since they were created under separate Charters, they are not included as part of the Adopted Budget of the City; however, they are included in the comprehensive annual financial reports.

Basis of Budgeting versus Basis of Accounting

The budgets of the *governmental funds* (for example, the General Fund, the Road & Bridge Fund, and the Debt Service Fund) are prepared on a modified accrual basis of accounting. This means revenues must be both measurable and available to liquidate liabilities of the current period. Likewise, expenditures generally are recognized when an event or transaction is expected to draw upon current expendable resources. There are no exceptions between the basis of budgeting and the basis of accounting for the governmental funds.

Budgets for the *proprietary funds* and *fiduciary funds* are adopted on the accrual basis of accounting, which means transactions and events are recognized as revenues/gains or expenditures/losses when they occur, regardless of the timing of related cash flows. The following are exceptions to the accrual basis of accounting, in the case of proprietary funds:

- Capital outlays are budgeted as expenditures.
- Depreciation is partially budgeted.
- Proceeds from the issuance of debt are considered to be revenues, not an increase in liabilities.
- Principal payments are shown as expenditures rather than reductions of liabilities.

The City applies all applicable Government Accounting Standards Board (GASB) pronouncements as well as the following pronouncements issued on or before November 30, 1989, unless those pronouncements conflict with or contradict GASB pronouncements: Financial Accounting Standards Board (FASB) statements and interpretations, Accounting Principles Board (APB) opinions and Accounting Research Bulletins.

During June 1999, GASB issued Statement No. 34. This statement established new accounting and financial reporting standards for state and local governments. The City implemented the new financial reporting requirements of GASB 34. From a budgetary perspective, the statement requires a budget to actual comparison, showing both the original adopted budget and the final working budget.